



Demand, Supply and Tools for Managing Nature Tourism in Protected Areas of Eastern Finland

Teppo Loikkanen
Customer Service Manager

 METSÄHALLITUS

Outline for presentation



Figures on Visitation & park profiles

Nature Tourism Destinations

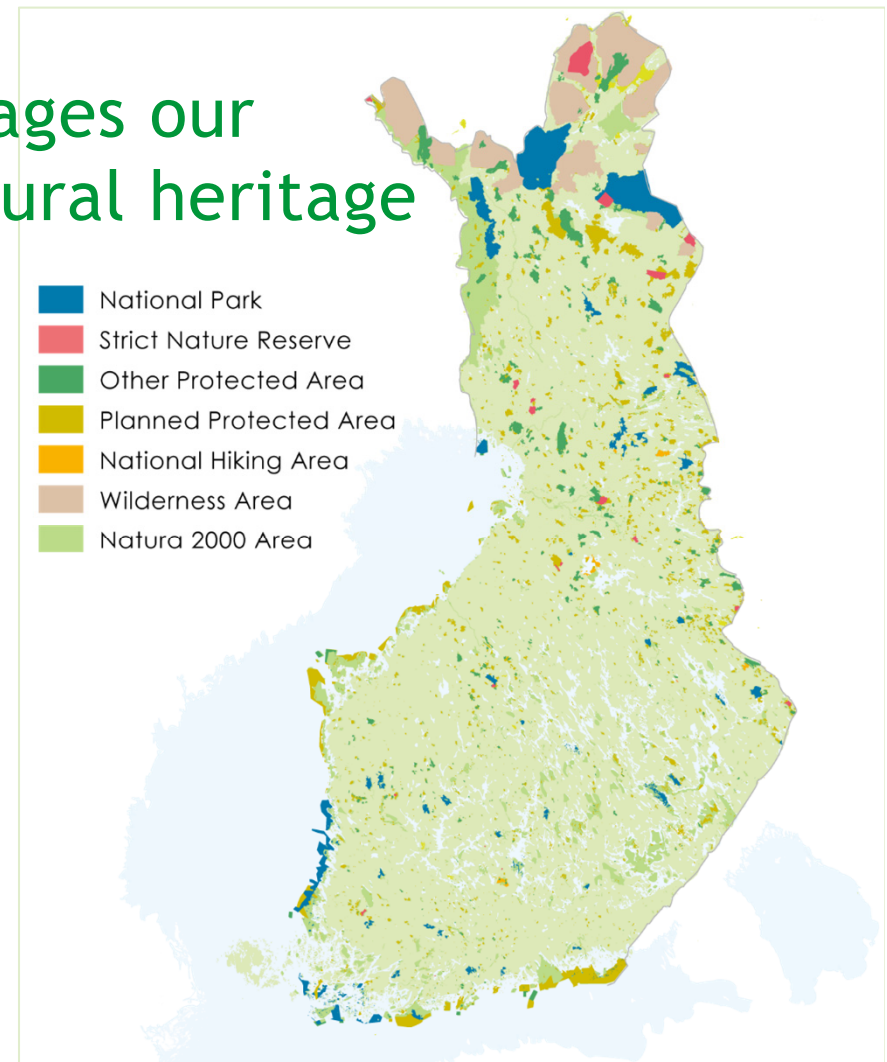
Facilities and trails

Sustainable Nature Tourism

- Principles
- Requirements
- MGMT Tools
 - Nature Tourism Plan
 - Contracts / Patnrship agreements with enterprices
 - Guide book
 - www -pages
 - Outdoors.fi
 - Excursionmap.fi
 - Repovedenkansallispuisto.fi

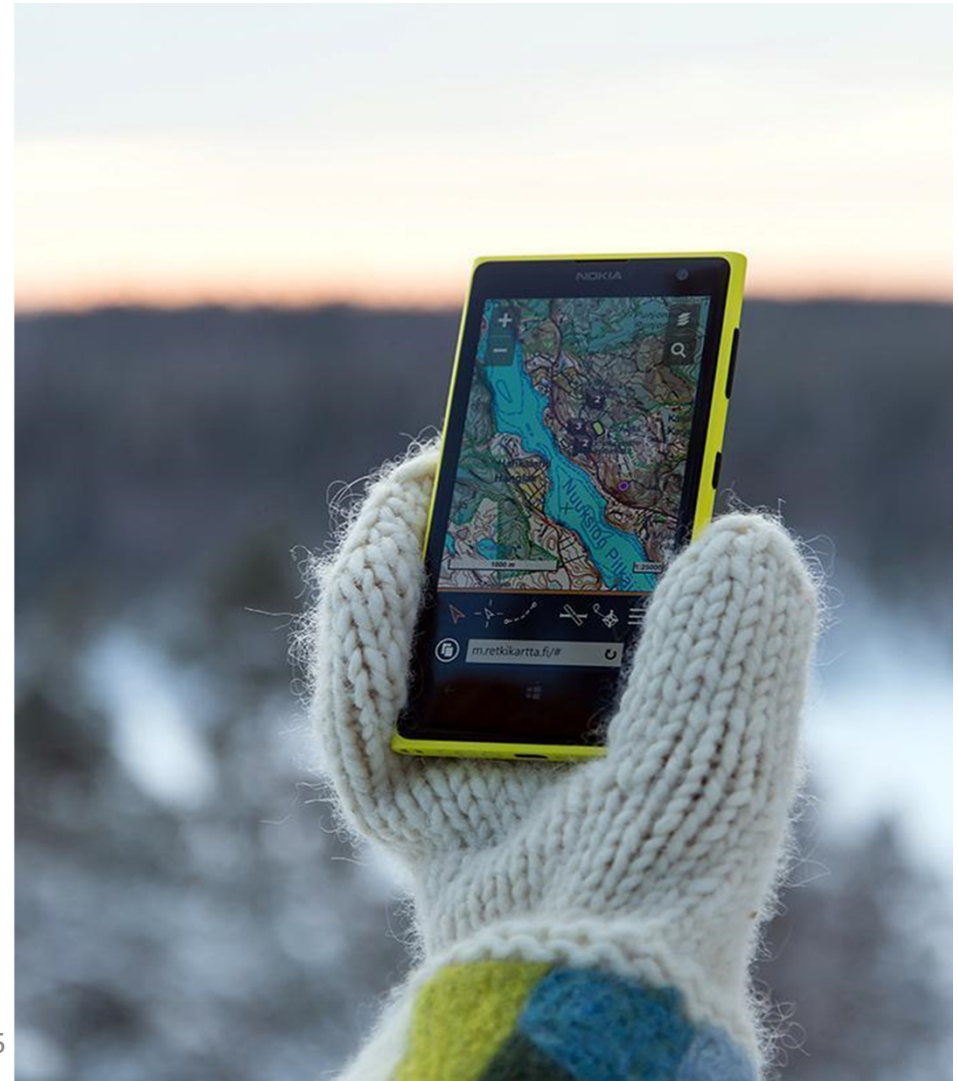
Parks & Wildlife Finland manages our most pristine nature and cultural heritage

- One organization to manage all state-owned areas reserved for nature conservation and hiking:
 - 40 national parks
 - 19 strict nature reserves
 - 5 national hiking areas
 - 12 wilderness areas in Lapland
 - over 3,000 other protected areas
 - and cultural heritage sites



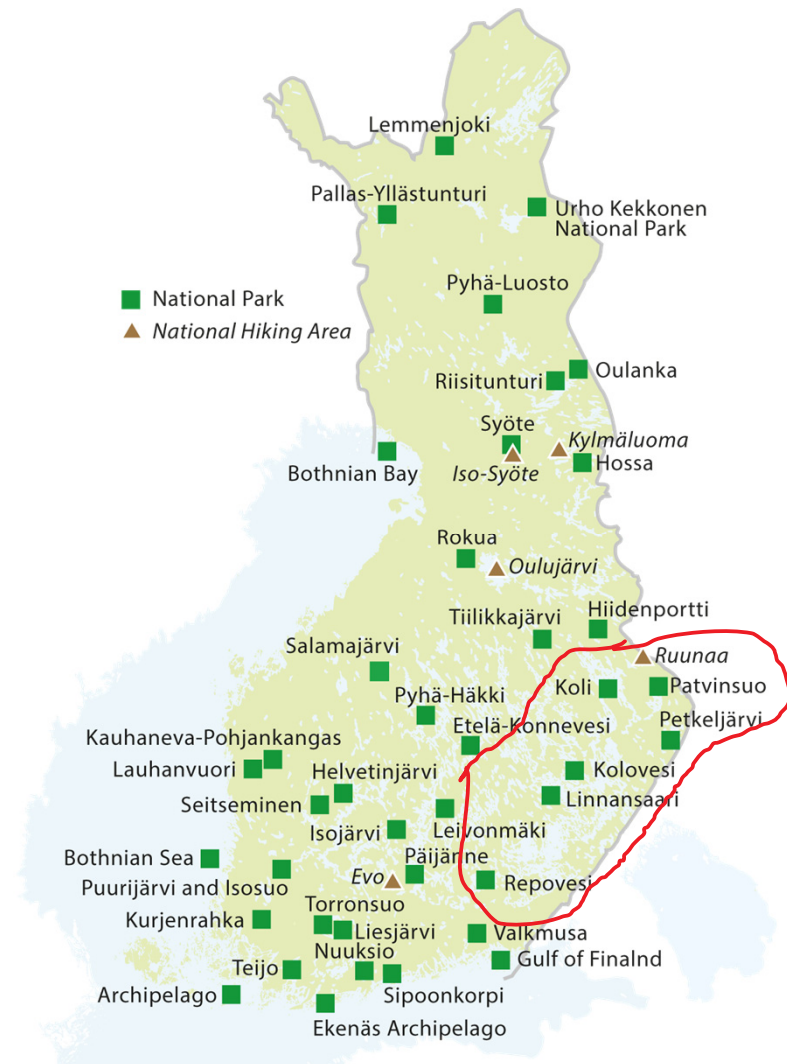
We serve customers in nature and online, 2018

- 25 nature centres maintained by us or by entrepreneurs
- Co-operation with nature tourism entrepreneurs: more than 600 contracts
- [Nationalparks.fi](#): over 13 million page views (all language versions together); more than 2,2 million unique visitors
- Online maps from [Excursionmap.fi](#): 3,9 million visits, 1,6 million unique visitors

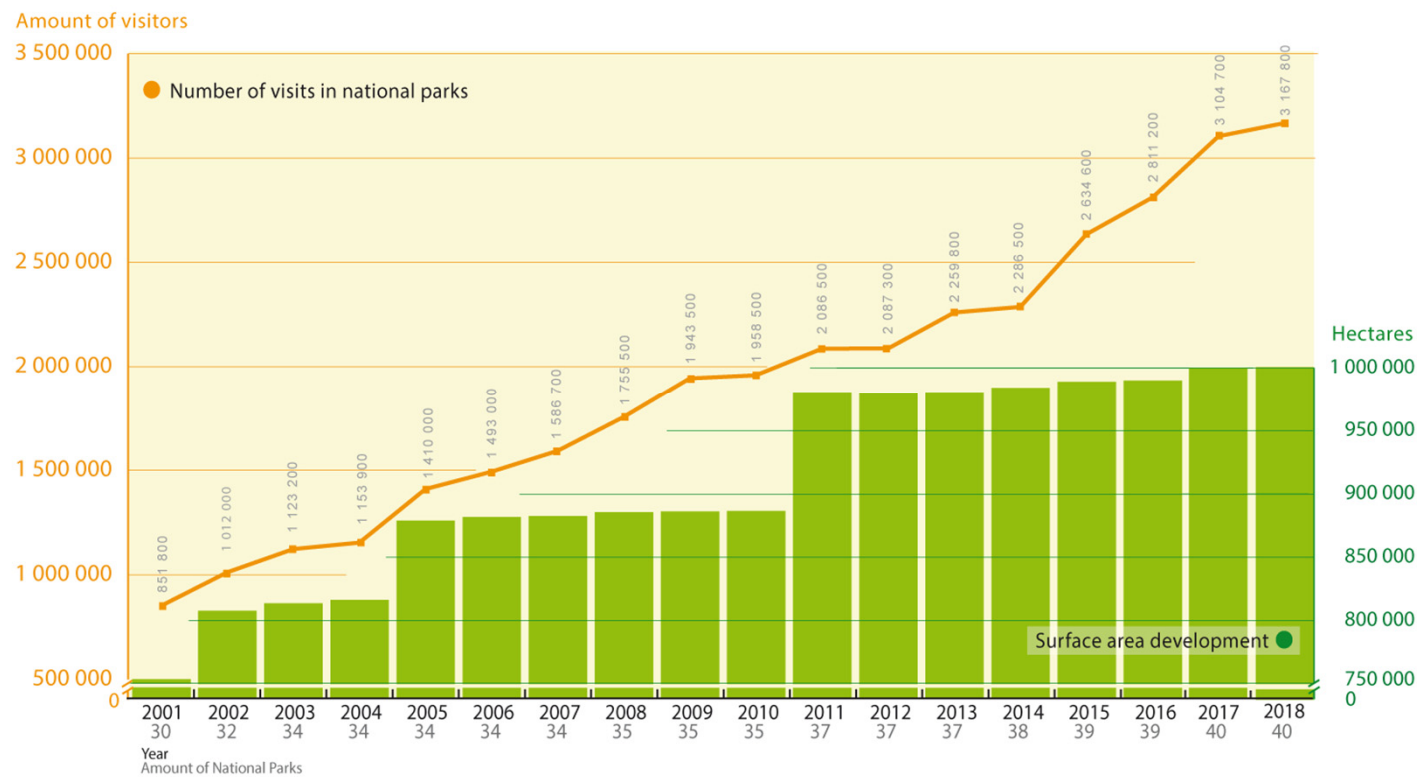


National parks and national hiking areas

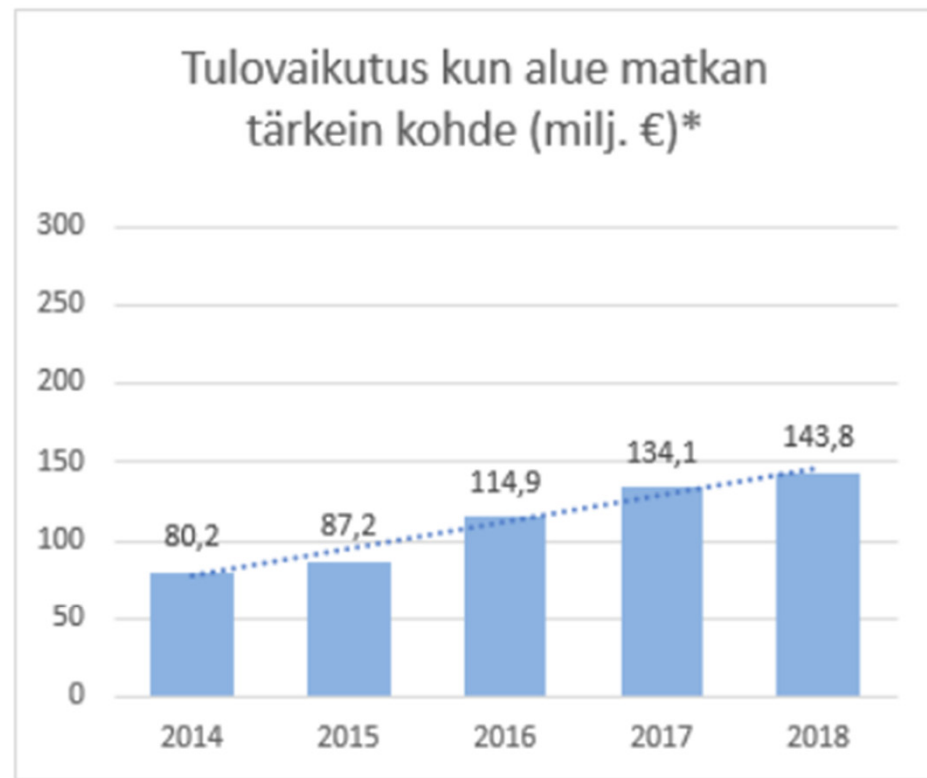
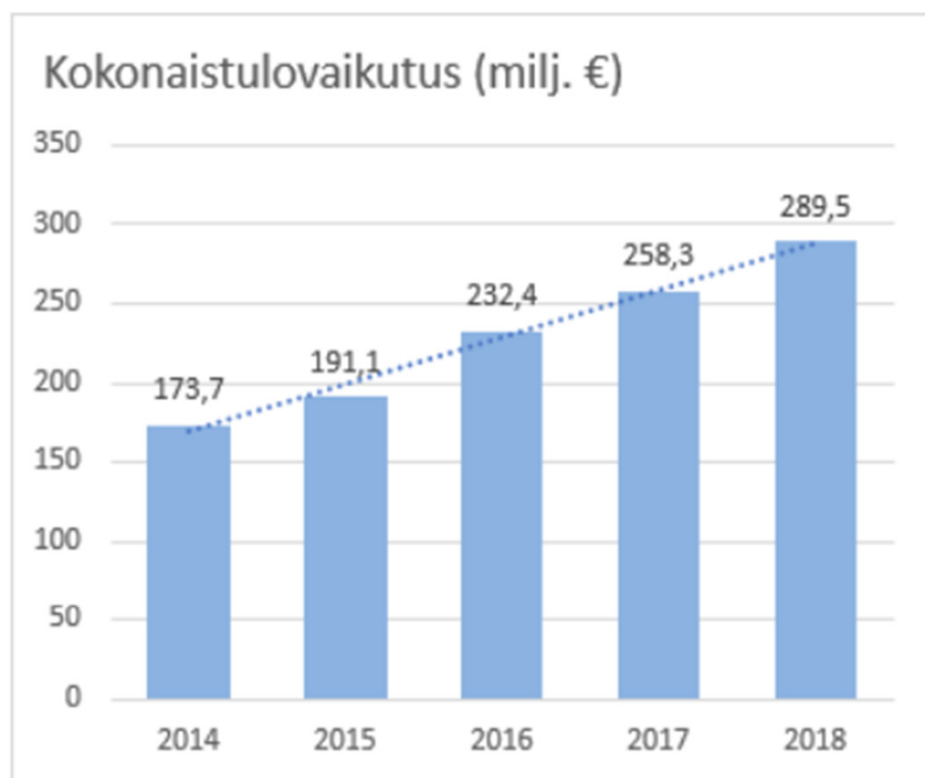
- 40 national parks, total area 10,018 km²
- 5 national hiking areas, total area 243 km²
- Parks & Wildlife Finland provides basic facilities, for example about
 - 5,000 km of trails,
 - 1,300 km of skiing routes,
 - 2,800 campfire sites, and
 - 400 wilderness huts.



Visitation to National Parks in constant growth



Tulovaikutukset



* Niiden kävijöiden, joille kansallispuisto oli matkan ainoa tai tärkein kohde, tulovaikutukset.

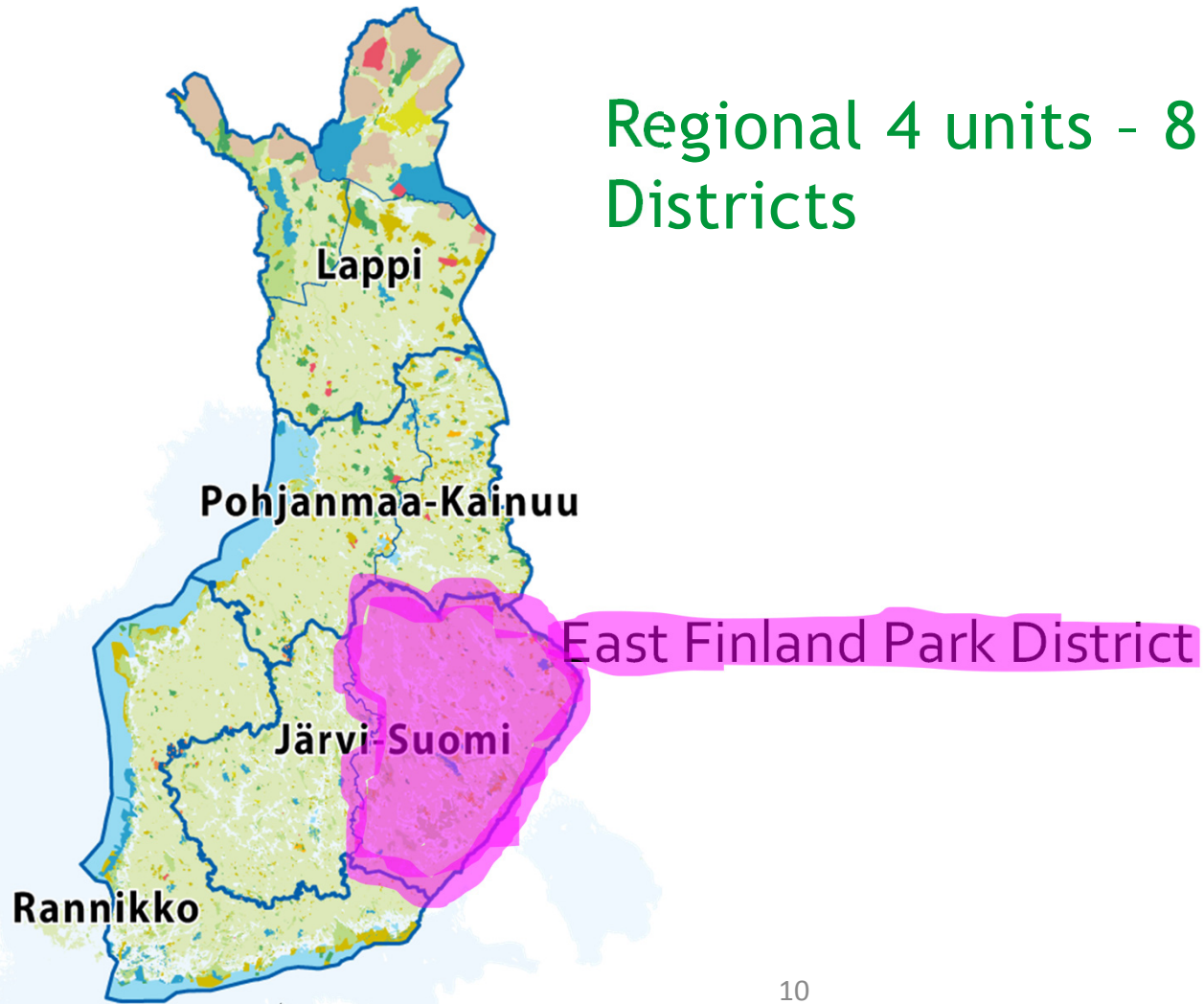
Tuottovaikutukset

Työllisyysvaikutukset



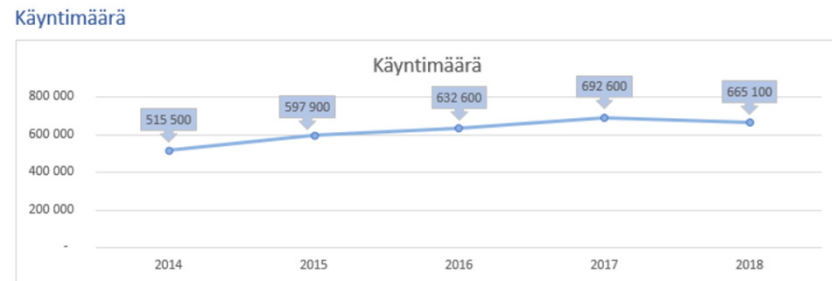
** Niiden kävijöiden, joille kansallispuisto oli matkan ainoa tai tärkein kohde, työllisyysvaikutukset.

Regional 4 units - 8 Park Districts



Visitation to National Parks in Eastern Finland

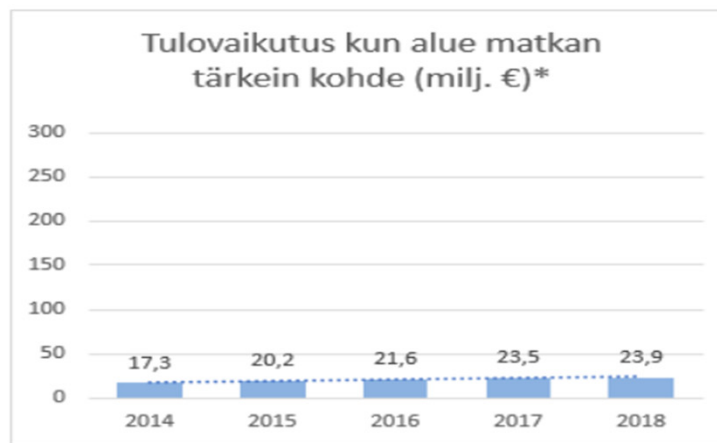
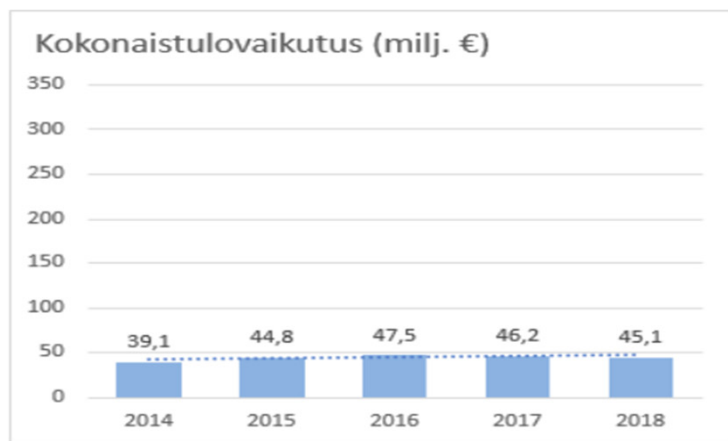
Eastern Finland Park District 2019



National Park Visit's Monetary Inputs In Local Economy

Eastern Finland Park District 2019

Tulovaikutukset

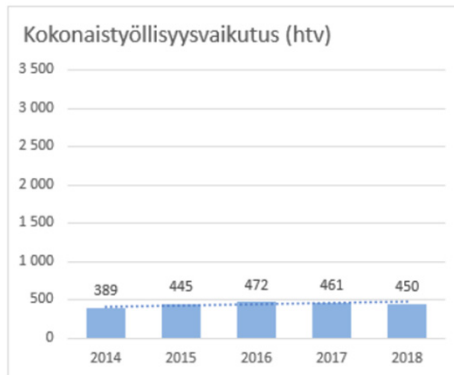


* Niiden kävijöiden, joille kansallispuisto oli matkan ainoa tai tärkein kohde, tulovaikutukset.

National Park Visit's Effects in Generating Local Jobs

Eastern Finland Park District 2019

Työllisyysvaikutukset



** Niiden kävijöiden, joille kansallispuisto oli matkan ainoa tai tärkein kohde, työllisyysvaikutukset.

The visitation numbers in 2018 of national parks, national hiking areas and other protected and hiking areas of recreational importance.

National Parks 2018

Total Number of National Parks 40

- Total Number of Visits 3,167,800

National Hiking Areas 2018

Total Number of Hiking Areas 5

- Total Number of Visits 263,900

Other well known Protected areas 50

- Total Number of Visits 1,536,000

Cultural Heritage Sites 9

Total Number of Visits 779,800

All Areas, Total Number of Visits

2018 6,858,600

National Parks in Eastern Finland 2018

Koli National Park	190,900
Kolovesi National Park	16,800
Linnansaari National Park	35,500
Patvinsuo National Park	15,800
Petkeljärvi National Park	20,800
Repovesi National Park	134,300
Tiilikkajärvi National Park	15,800

National Parks in Eastern Finland **7**

- **Number of Visits** **429,900**

National Hiking Areas

Ruunaa Hiking Area **83,800**

Other Protected Areas in Eastern Finland 2018

Imatra Crown Park	110,000
Neitvuori	13 000
Paistjärvi	5 000
Peurajärvi	8 100
Pihlajavesi	37,000
Punkaharju NR and RF	151,400
Siikalahti	15,700
Telkkämäki Nature Reserve	1,800
Eastern Finland, number of areas	8
• Total Number of Visits	342 000

Around the country...

In the national parks, hiking areas, historical sites, visitor centres etc. there were altogether 5 948 500 counted visits in 2017

... of which

1,2 million visited the visitor centres.

For ecotourism services P&WF managed

- 6 000 km nature trails and hiking routes
- 2 000 km skiing routes
- >2 000 dry toilets and waste management facilities
- Clients gave a 4,3 credit for 2017 service on scale 1-5

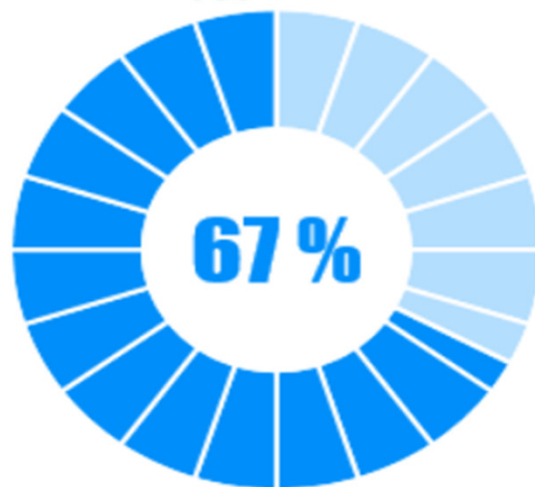


Koloveden kansallispuisto

Päiväkävijöiden osuus



Yöpyjien osuus



Kokonais- viipymä, kävijävuorokausia

39 829

Alueen käyntimäärä yhteensä, käyntiä

16 820

Koloveden kansallispuisto

Alueella käyntejä yhteensä

16 820



Ulkomaiset matkailijat, %



Kotimaiset matkailijat, %



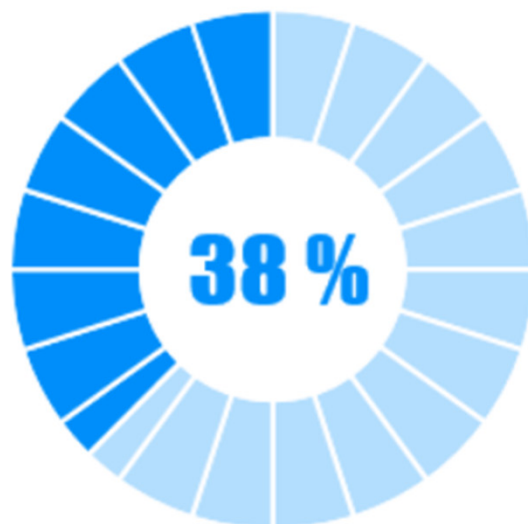
Paikalliset asukkaat, %

Kolin kansallispuisto

Päiväkävijöiden osuus



Yöpyijien osuus



Kokonais- viipymä, kävijävuorokausia

189 420

Alueen käyntimäärä yhteensä, käyntiä

190 926

Kolin kansallispuisto

Alueella käyntejä yhteensä

190 926



Ulkomaiset matkailijat, %



Kotimaiset matkailijat, %



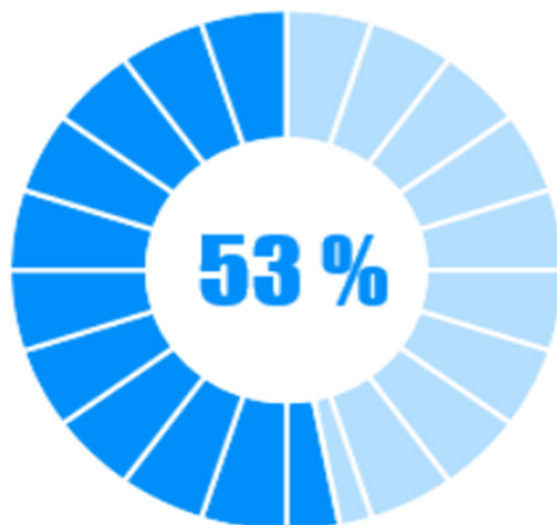
Paikalliset asukkaat, %

Punkaharjun ls-alue ja tutkimusmetsä

Päiväkävijöiden osuus



Yöpyijien osuus



Kokonais- viipymä, kävijävuorokausia

342 117

Alueen käyntimäärä yhteensä, käyntiä

151 425

Punkaharjun Is-alue ja tutkimusmetsä

Alueella käyntejä yhteensä

151425



Ulkomaiset matkailijat, %

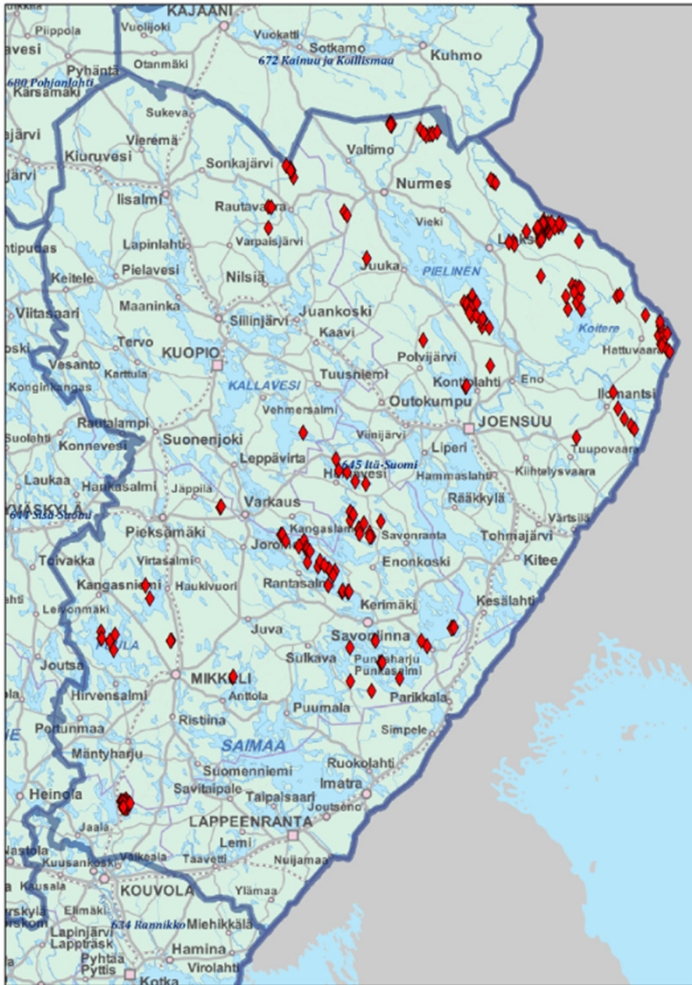


Kotimaiset matkailijat, %



Paikalliset asukkaat, %

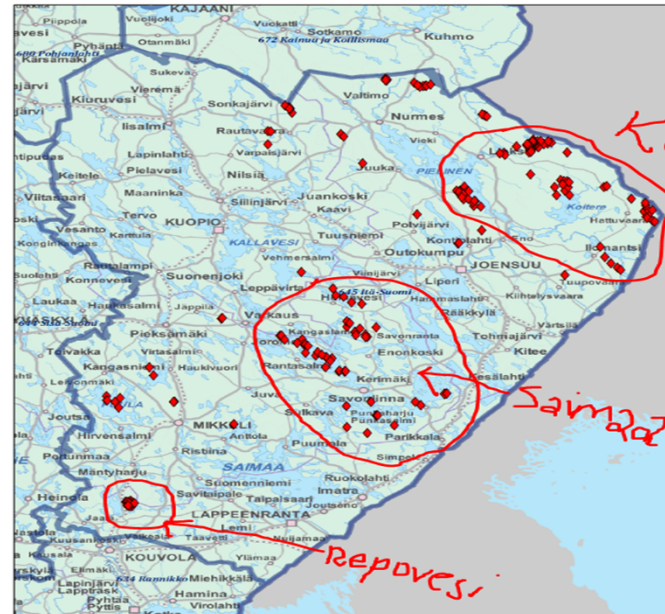
Fire places (230 pcs.)



Nature Tourism Destinations

Eastern Finland Park District 2019

Fire places (230 pcs.)



Nature Tourism Destinations' Recreational Facilities

Eastern Finland Park District 2019

Destinations	Hiking, open /free buildings		Interpretive buildings		Commercial accommodation		Interpretive facilities				
	Open huts	Reservation huts	Nature Centres	Nature hut	Rental Cabins	Rental huts	Interpretation shelters	Information points	Interpretive signs	Other interpretive structures	Interpretation, total
645 Itä-Suomi (MH/LP omist)	7	2	1	2	16	7	4	236	322	8	570
640021 Saimaa			1	2	4	5	1	72	98	7	178
640023 Repovesi		1					1	4	19		24
640024 Tiilikka	1				1		1	14	23		38
640030 Koli - Ruunaa			1	1	10	1		63	69		132
640031 Patvinsuo - Petkeljärvi	4			1	2			38	54		92
640044 Itä-Suomi, muut	2	1				1	1	45	59	1	106
YHTEENSÄ	7	2	2	4	17	7	4	236	322	8	570

Nature Tourism Destinations' Recreational Facilities

Eastern Finland Park District 2019

Destinations	Outdoor facilities, pcs												Boating structures		
	Lapp hut	Lean_to:s	Cooking shelters	waste mgmt shelters	Firewood shelters	Composting toilets	Firewood shelter - composting toilets	firewood shelter - maintenance garages	Firewood shelter - composting toilets - maintenance	Fire places (outdoors)	Tables and benches	Total, pcs	Boat decks	Boat floaters and tie up places	total, pcs
645 Itä-Suomi (MH/LP omist)	8	46	18	37	189	204	25	1	6	222	199	955	58	77	135
640021 Saimaa		2	8	5	36	45	15		1	61	86	259	30	74	104
640023 Repovesi	4	2	3	6	17	6				22	28	88	16		16
640024 Tiilikka		3		4	9	12				11	10	49	2	1	3
640030 Koli - Ruunaa		16	1	12	60	67	4			63	28	251			
640031 Patvinsuo - Petkeljärvi		12	5	3	28	37	5	1	3	28	26	148	5		5
640044 Itä-Suomi, muut	4	11	1	7	39	37	1		2	37	21	160	5	2	7
TOTAL	8	46	18	37	189	204	25	1	6	222	199	955	58	77	135

Nature Tourism Destinations' TRAILS

Eastern Finland Park District 2019

	Hiking trails	Nature trails	Horse riding trails	Trails total	Trails in reality (overlaps subtracted)	Snoeshoe trail	Skiing trail/nordic	Skiing trail/skating	Winter trails sum	Trails in reality (overlaps subtracted)	Snow mobile routes
Saimaa	30,122	6,480		36,602	33,755	24	16	25			
Repovesi	33,611			33,611	25,220	4,2	15				
Koli (+ Ruunaa+Patvinsuo - Petkeljärvi)	357,280	25,288	6,340	388,908	322,390	6,841	34,224	0,342	41,407	40,027	0,100
YHTEENSÄ	574,000	43,000	6,300	623,000	541,000	35,000	62,000	25,300	150,000	143,000	1,365

Ways of ensuring sustainability in protected areas

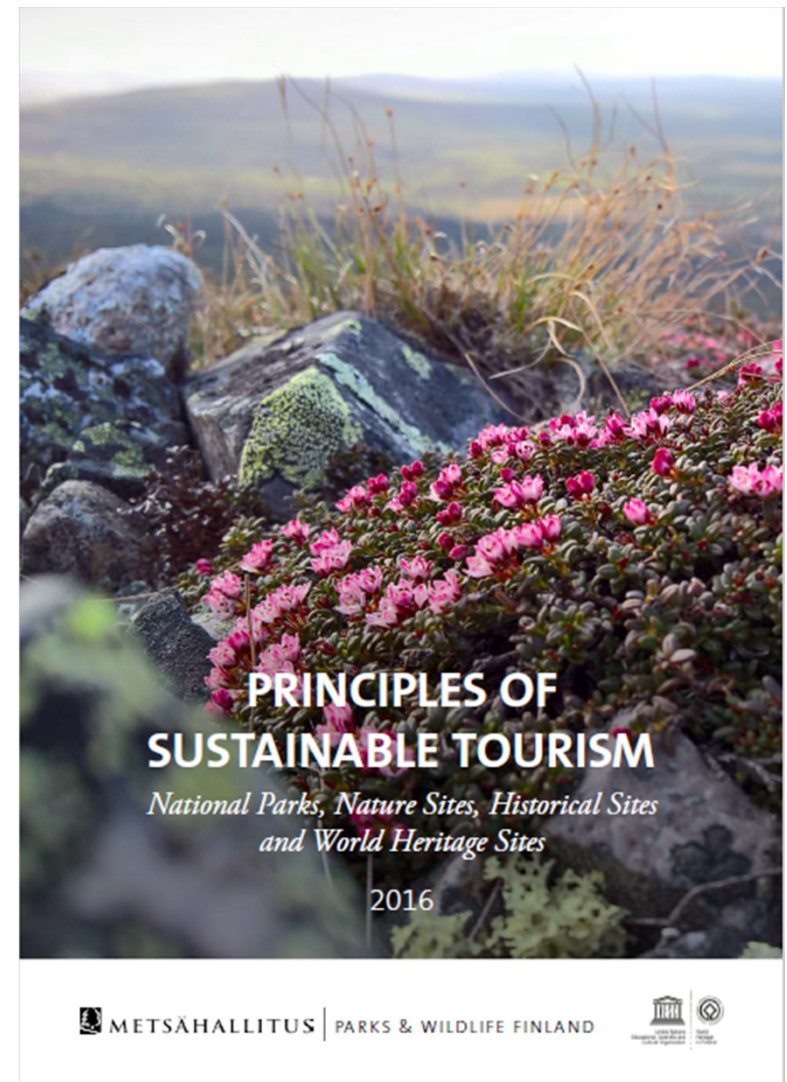
- Principles of sustainable tourism
- Plans for sustainable tourism, including indicators for monitoring sustainability, and limits of acceptable change (LAC)
- Cooperation agreements with enterprises operating in or adjacent to the national parks

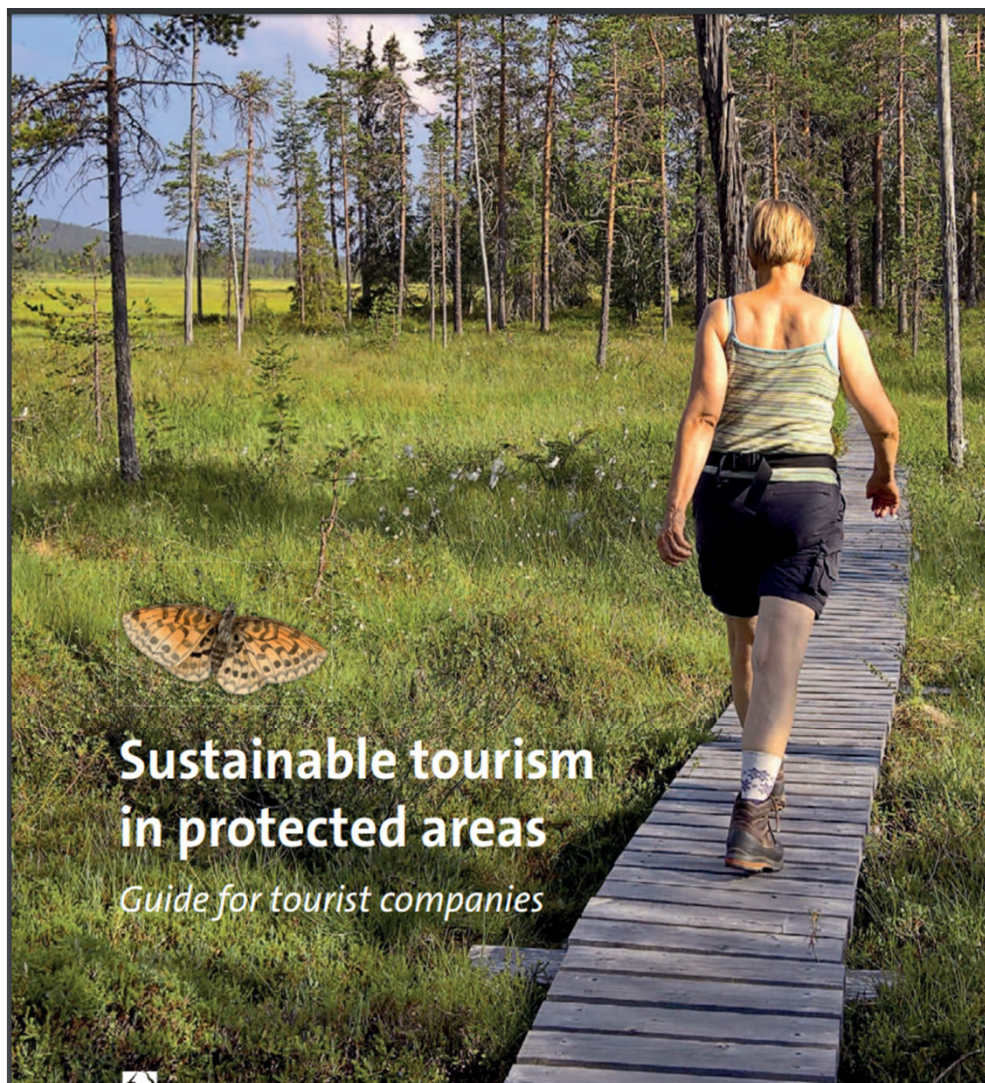


Principles of sustainable tourism

National Parks, Nature Sites, Historical Sites and World Heritage Sites

- are important tourist attractions
- Can be utilized for tourism purposes, as long as this is coordinated with the objectives of protection
- Metsähallitus Parks & Wildlife Finland and the UNESCO World Heritage sites in Finland share the principles of sustainable tourism, which we take into account throughout our own operations and in our cooperation with tourism entrepreneurs.
- We promote sustainable tourism. In order to achieve this goal, we cooperate to...





Sustainable tourism in protected areas

Guide for tourist companies

THE PURPOSE OF THIS GUIDE

This guide is intended for tourist companies operating in protected areas managed by Metsähallitus Parks & Wildlife Finland. Fluent cooperation between the tourism business and Metsähallitus Parks & Wildlife Finland promotes the operating conditions of nature tourism in protected areas. The goals of this collaboration include

- Sustainable nature tourism in national parks, other protected areas and on historical sites. In this guide, these areas are jointly referred to as protected areas.
- Making partner companies, Parks & Wildlife Finland and protected areas better known and enhancing their attractiveness.
- Increasing the impact of operations.
- Providing the best possible service for common customers.
- Uniform practices for tourism cooperation.
- Active and mutually beneficial interaction.
- Consistent, high-quality marketing and communications.



Sustainable tourism in protected areas

Guide for tourist companies

EDITORS Joel Erkkonen, Maarit Kyöstilä, 2016
Aino von Boehm, 2019
LAYOUT Anna Pakkanen

CONTENTS

1	What is sustainable development?	4
2	Sustainable tourism in protected areas and historical sites	5
3	Cooperation to promote sustainable tourism	7
4	Partnership agreements	8
5	The use of logos and names of protected areas	9
6	Assessing the sustainability of tourism	10
7	Litter-free hiking	11
8	Visitor monitoring methods	12
9	Environment and quality at Metsähallitus	13
10	Protected areas in Finland	14
11	Information online	16
12	Metsähallitus organisation	17
13	Contacts	18



JULKAISTU AINOASTAAN PDF-MUODOSSA

Sustainable tourism in protected areas. Guide for tourist companies

Erkkonen Joel, Kyötilä Maarit, von Boehm Aino (eds)
Metsähallitus, Vantaa, 2019

Ulkoasu: 18 s.

Kieli: englanti

Muut kieliversiot: suomi, ruotsi

ISBN: 978-952-295-172-4 (pdf)

Tiivistelmä:

This guide is intended for tourist companies operating in protected areas managed by Metsähallitus Parks & Wildlife Finland. Fluent cooperation between the tourism business and Metsähallitus Parks & Wildlife Finland promotes the operating conditions of nature tourism in protected areas. The goals of this collaboration include

- Sustainable nature tourism in national parks and other protected areas.
- Making partner companies, Parks & Wildlife Finland and protected areas better known and enhancing their attractiveness.
- Increasing the impact of operations.
- Providing the best possible service for common customers.
- Uniform practices for tourism cooperation.
- Active and mutually beneficial interaction.
- Consistent, high-quality marketing and communications.

Päivitetty 16.02.2019



Sähköinen julkaisu:
sustainabletourism.pdf (4 M)



A photograph of a person standing on a rocky outcrop, taking a picture of a large lake. The person is wearing a grey t-shirt, red shorts, and white sneakers. The lake is surrounded by dense green forest under a blue sky with scattered clouds. The text 'Saimaa Protected Areas Nature Tourism Plan' is overlaid in the center of the image.

Saimaa Protected Areas Nature Tourism Plan

Metsähallituksen Luonnonsuojelujulkaisu. Sarja C 64

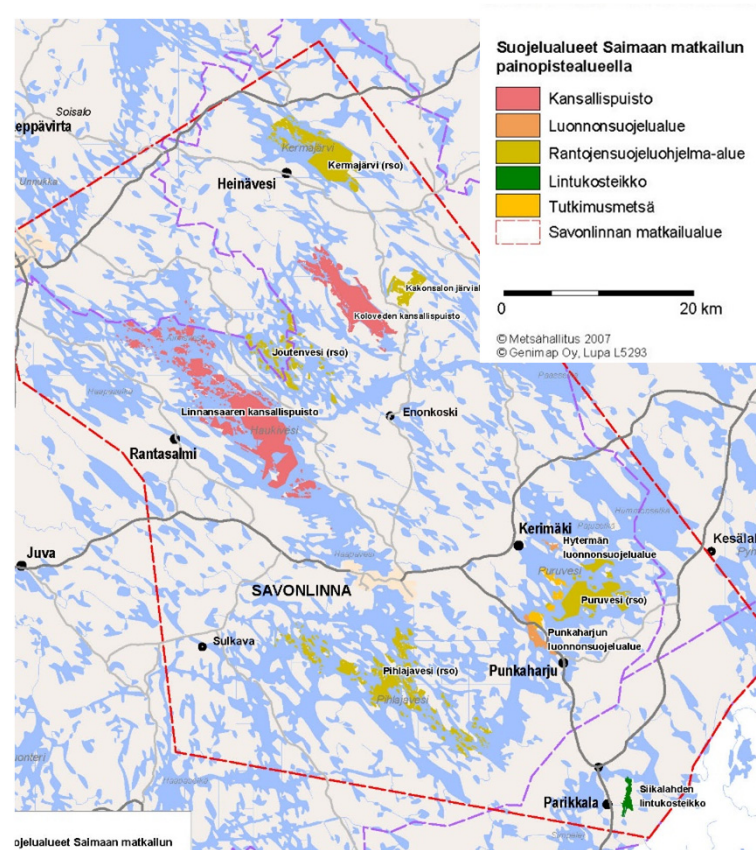
Saimaa Protected Areas

2 National Parks:
Linnansaari and Kolovesi

5 Shoreline protected Areas:
Puruvesi, Pihlajavesi, Joutenvesi,
Kermajärvi and Kakonsalo

Punkaharju Nature Protection
Area (1872) and Research Forest

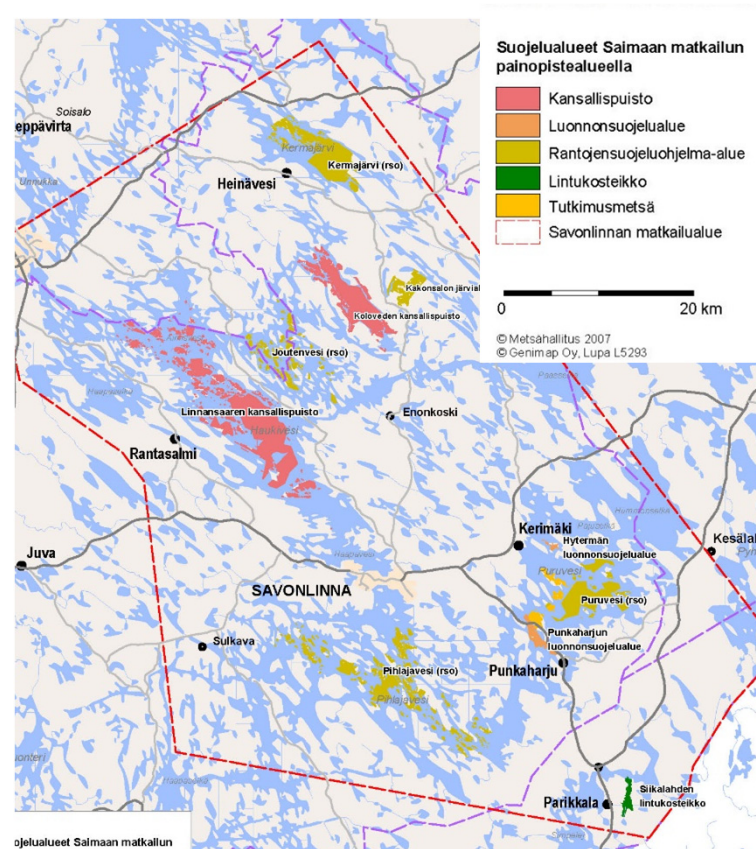
Siikalahden Wetland Protection Area



Saimaa Protected Areas

Outdoor facilities in protected areas

- 1 Nature Centre
- 1 Visitor Info
- 1 Nature Cabins
- 2 outdoor museums
- 1 campground
- 4 rental cabins
- 10 Nature& culture trails
- 2 Birdwatching towers
- Several historic sites
- 40 managed recreational harbours with facilities and infoboards /signs
- Websites



A Nature Tourism Plan?

- Need to promote nature tourism on state-owned lands and waters -> Nature tourism destinations(= areas where nature based tourism plays an important role) were identified by the NHS.
- Saimaa area is one of these 10 -15 destinations in Finland
- Functional thinking - combines Saimaa protected areas with the surrounding Savonlinna holiday region
 - Nature tourism enterprises are located outside of protected areas
 - Also other than nature tourism enterprises benefit from protected areas (accommodation, restaurant services, transportation)
 - Traditionally management plans are done only for a single area

Top Three (3) Requirements for Successful Nature Tourism

<p>1. Vetovoimainen luontokohde- tai alue</p> <ul style="list-style-type: none"> ◦ Kansallispuisto tai muut tunnettu suojelu-alue ◦ maailmanperintökohde tai -alue ◦ Historiallisesti arvokas ja tunnettu kohde ◦ Vetovoimainen luonto-/kulttuuripahtuma 	<ul style="list-style-type: none"> ◦ Kansallispuisto, maaseutu, kansallinen / kansainvälinen tunnettuus (Luontoon.fi kieliversioimeen) ◦ Sammas (järvisuomi) kokonaisuudessaan ◦ Sammas-Pielinen-maailmanperintökohteen edistämisen
<p>2. Hyvä infrastruktuuri</p> <p>Kulkuyhteydet ja julkiset liikennepalvelut alueelle eli <u>alueen saavutettavuus</u></p> <p>Infrastruktuuri alueella</p> <ul style="list-style-type: none"> ◦ Reittit, polut, lensi- ja tulipaikat, retkisatamat ◦ matkailuinfo- ja opastuspalvelut ◦ Kartat, tienviitat, esitteet, näyttelyt ◦ Huoltoasemat, kahvilat ◦ ruokailu ja majoituspalvelut 	<ul style="list-style-type: none"> ◦ Yrittäjien näkemys: Kunnat, kaupungit, valtion tulisi tehdä elinkeinokentällä kunnallisen ◦ Metsähallitus vastaa suojelualueiden infrastruktuurista ja tiedottaa suojelualueiden asioista sekä markkinoi niitä alueita – yhteistyö sopimusyrittäjien kanssa ◦ Saavutettavuutta auttavat välineet (kartat jne.), MH usem mukana toteuttamassa ◦ Matkailumfot, opasteet, kunnat
<p>3. Sisältö ja sen tuottaminen</p> <p>"Alueen profiloituminen" eli omaleimaisuuden esilletuominen ja vahvuuksien hyödyntäminen elementteinä: Historia, Tainat, Perinteet, Kohteet, Aktiviteetit, Tapahtumat</p> <p>> Opastusviestintä omatoimille kävijöille ja vikiä käyttäjille</p> <p>> Ohjelmapalvelut matkailijoille</p>	<ul style="list-style-type: none"> ◦ Ohjelmapalveluissa yrittäjät, yritysälähtöiset verkostot & hankkeet, kehitystyössä mukana ammattikorkeakoulu, taustalla Yliopisto tuottaa tietoa matkailijoista ja heidän tarpeistaan ◦ Sisällön tuotannossa mukana Metsähallitus (alueiden tunnetus, tieto) ◦ Opastusviestintä alueilla Metsähallitus > Yhteisiä viestejä?
<p>4. <u>Kustannustehokkaat, hyvin kohdenetut, myynti-, markkinointi- ja jakelukanavat</u></p>	<ul style="list-style-type: none"> ◦ Matkailuorganisaatiot (Savonlinnan matkailu Oy, Rantasalmen matkailu ry) ja tas yritykset itse ◦ Markkinoinnissa ja myynnissä kaivattiin lisää yhteistyötä ◦ Metsähallitus ei toimijana tässä vaiheessa, lukuun ottamatta Luontoon.fi:tä ◦ ulkomaismarkkinointi (Matkailun edistämiskeskus MEK)
<p>5. Toimiva yhteistyöverkosto eli saumattomat palveluketjut ja niiden hallinta</p> <ul style="list-style-type: none"> ◦ Toimijoiden myönteinen asennoituminen yhteistyöhön ◦ Verkoston / toimijoiden organisoituminen ja toiminta ◦ Tehokas viestintä ja sitä tukeva tiedonhallinta 	<ul style="list-style-type: none"> ◦ Päätoimijoina matkailuyritykset ja yritysverkostot ◦ verkostoa kokoomassa alueelliset matkailuorganisaatiot ja niiden yhteistyö ◦ Asiakastytyäisyys ja markkinatutkimukset: Yliopisto, ammattikorkeakoulu ◦ MH verkostossa sivuroolissa, alueiden hallinta?

1. Attractive nature destination

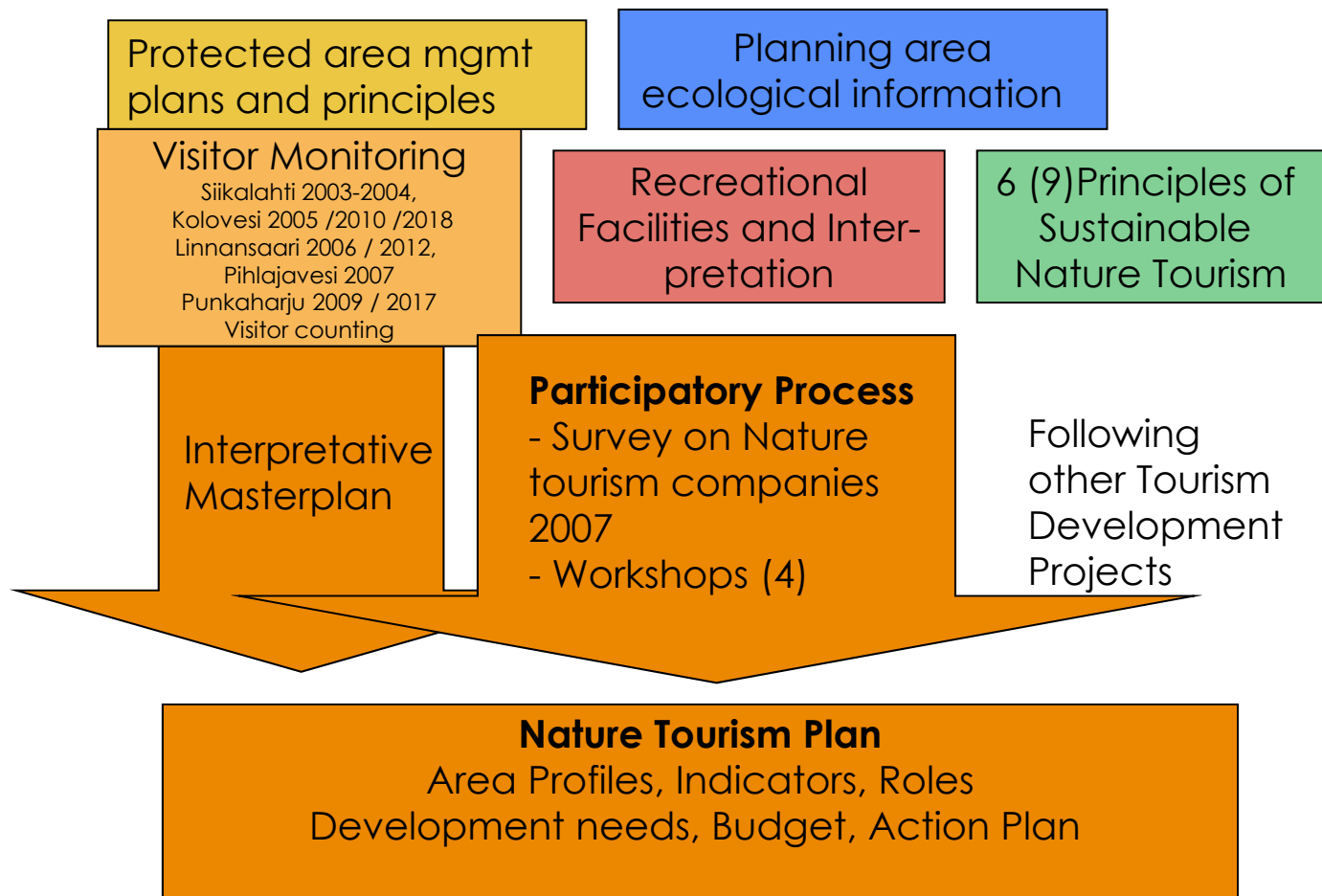
- National Park, other well known protected area
- World Heritage Sight
- Historical sight
- Attractive Nature and culture centre Haltia, Siida, Riihisaari, Koli

2. Accessibility, A. To the sight, B. At the sight

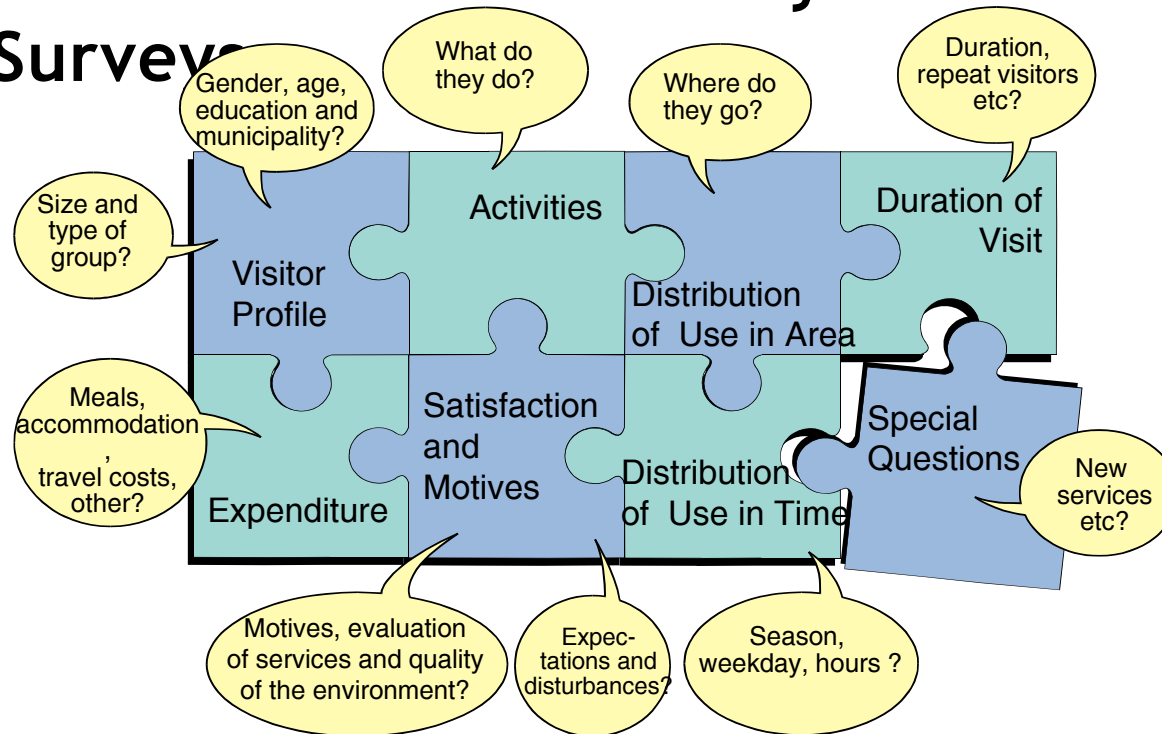
- good infrastructure, roads, public transport, etc.
- routes, trails, harbours, cabins, other facilities
- Tourism information and interpretative services
- Maps, signs, brochures, exhibitions
- Kiosks and cafe's, souvenir shops
- Restaurants and accommodation

3. Contents

- "profiling the area" communicating its' unique values, special features, history by applying, stories, activities, events
- > Environmental Interpretation for individual visitors and locals
- > Programme services for tourist groups



Information Collected by Visitor Surveys





Metsähallitus
**Interpretive Masterplan for
Saimaa tourism destination**
2009 - 2015





Saimaa Nature Centre Riihisaari



Welcome to Saimaa Nature Centre Riihisaari

The historical setting of Olavinlinna Castle, surrounded by the scenic Lake Saimaa, makes Lake Saimaa Nature- and Cultural Centre Riihisaari a unique destination, where Savonlinna Provincial Museum and Metsähallitus operate together. Riihisaari is a meeting place and exhibition centre, providing experiences and information on the region's cultural history and natural landscape year-round.

Opening Hours in 2019

Daily 10 a.m. - 5 p.m. (In May daily 9 a.m. - 5 p.m.)

Closed: 19.4., 21.-22.6., 6.12. and 16.-24.12.2019

We reserve the rights for changes.

Entrance Fees:

[Savonlinna Provincial Museum tickets](http://www.savonlinna.fi/riihisaari) (www.savonlinna.fi/riihisaari)

Contact Information

Address: Riihisaari, 57130 Savonlinna, Finland

Telephone: +358 206 39 5929

E-mail: [saimaa\(at\)metsa.fi](mailto:saimaa(at)metsa.fi)

Location: Situated at the eastern end of Linnankatu street in the old town of [Savonlinna](http://www.savonlinna.fi) (www.savonlinna.fi), next to Olavinlinna Castle. [Read more](#)

Arrival: By car or public transportation. [Read more](#)

Visit: Open throughout the year, and every day during the summer months. Free entrance to the Museum Shop and hiking info point, but exhibitions are subject to a fee. [Read more](#) (www.savonlinna.fi/riihisaari)

Things to Do and See: The main exhibition: *In the heart of Saimaa*, temporary exhibitions, events, a short film on the Saimaa ringed seal. [Read more](#). In the summer, museum ships are moored at the pier by Riihisaari and open to visitors.

Suitability: An fascinating destination for visitors of all ages. Suitable for visitors with mobility difficulties. Pets are not permitted in the Nature Centre.



[Kolovesi National Park](#)

[Linnansaari National Park](#)

[Riihisaari](#)

[#finnishparks](#)



Nearby Destinations

[Kolovesi National Park](#)

[Linnansaari National Park](#)

[Lake Pihlajavesi Shore Conservation Programme Area](#) (in Finnish)

[Punkaharju Nature Reserve](#)

[Siikalahti Wetland](#) (in Finnish)

Visit

Things to Do and See

Services

Exhibitions

- Metsähallitus and Savonlinna Provincial Museum's joint **Saimaan sylissä (in the heart of Saimaa) exhibition** tells the story of man and nature and how this relationship has evolved since the last ice age. A large part of the exhibition is dedicated to the Saimaa ringed seal. The seal is Lake Saimaa's most known inhabitant and one of the most endangered seal species in the world. The exhibition also tells how the city of Savonlinna was founded in the heart of Lake Saimaa and how the steamship traffic defined the region. The audiovisual effects of the exhibition offer something for all senses and take the visitor on a journey into the relaxed lifestyle of the Lake Saimaa region. The exhibition that opened in the summer of 2018 is produced together by Metsähallitus and Savonlinna Provincial Museum.
- There is also **visiting art, nature and culture exhibitions** (in Finnish) at Riihisaari.



Films

- **Torsti - the Child of the Depths** (12 min.)
 - A unique nature film about the underwater life of a Saimaa Ringed Seal pup, English, German, Finnish). Direction and photography by Juha Taskinen.
- **Ice pup** (3 min.)
 - A music story about a Saimaa ringed seal mother and its pup in a song form. Lyrics in

i Nature Centre Ukko



come to Koli Nature Centre Ukko

Koli Nature Centre Ukko offers Finland's best known national landscape, the hills of Eastern Finland and heritage sites. The Koli Nature Centre Exhibition displays Koli's geological features, natural environment and culture in a variety of ways and provides advice and information for hiking in the Koli National Park. The Nature Centre is only a few hundred metres from the Ukko-Koli lookout point -

Opening Hours 2018

28.10. - 31.12. Mon - Sat 10 am - 5 pm, Sun 10 am - 3 pm

24.12. closed
25.12. 12 am - 5 pm
26.12. 10 am - 3 pm

Opening hours 2019

1.1.-21.6. 2019 Mon - Sat 10 am - 5 pm, Sun 10 am - 3 pm
22.6.-11.8.2019 Mon - Sat 9 am - 7 pm, Sun 10 am - 5 pm
12.8.-31.12.2019 Mon - Sat 10 am - 5 pm, Sun 10 am - 3 pm

EXCEPTIONS
24.12. CLOSED
25.-26.12. 10 am-3 pm

We reserve the rights to changes.

Contact Information

Address: Ylä-Kolintie 39, 83960 Koli (Lieksa), Finland

Telephone: +358 206 39 5654

E-mail: ukko(at)metsa.fi

Location: [Koli \(www.koli.fi\)](http://www.koli.fi), [Lieksa \(www.lieksa.fi\)](http://www.lieksa.fi), [Koli National Park](#). [Read more](#)

Arrival: By car and public transportation. [Read more](#)

Visit: Opened on weekdays from 10 am to 5 pm. On weekends and holidays, opening hours vary seasonally. Exhibitions and picture shows are subject to a fee. Advance bookings are required for guided tours subject to a fee. [Read more](#)

Nuuksio

Activities

Directions and Maps

Frequently Asked
Questions

History

Instructions and Rules

Nature ▼

Services ▼

Haukkalampi

Partners

Trails

What's New

More Information

Services in Nuuksio National Park

Customer Service and Guidance

- [Finnish Nature Centre Haltia](#)
- Nuuksio Customer Service number: +35840 163 6200
- [Guide Hut Haukanpesä](#) is open during the summer.
 - Maps and other small products are sold at the Guide Hut.
 - Information and guidance on hiking, at the Nature Information Hut.
 - Guided tours in the park for school and kindergarten groups.

Services Offered by Enterprises and Organisations in the National Park

- [Enterprises and organisations offering services in the national park](#)
 - They have a cooperation agreement with Metsähallitus and they follow the principles of sustainable nature tourism when operating in the national park.

Meals, Where to Buy and Prepare

When you plan your outdoor activities and trips to Nuuksio, please note that there are no grocery stores in Nuuksio area.

In [Haltia's restaurant](#) you can enjoy lovely meals, buy snacks and sandwiches but the closest grocery stores are in Espoo centre.


 Services Provided by
Partners

 Check for
forest fire warnings

Destination Brochure


 Pdf-file 6.2 Mb ([julkaisut.metsa.fi](#))

Kansallispuisto - National Park Reponvesi

Reponvesi kansallispuisto
Reponvesi National Park
Perustettu/Established 2003
• Sijainti/Location: Kouvola, Mäntymarju

Metsähallitus
Parks and Wildlife Finland
• puh/vei +358 (0)206 39 5929
• a-sivusto/website: www.reponvesi.fi
• Luontoon.fi/Reponvesi: nationalparks.fi/reponvesi, utimutunen.fi/reponvesi, tuomola.fi/reponvesi, parki.nationalparks.fi/reponvesi, facebook.com/reponvesikansallispuisto
• Yrittäjäopas/Artisan guide: www.yrittajareponvesi.fi

Retkellä luontoa suojelemme:

- Kunnioita luontoa ja huomioi kansareleioit.
- Tee tulet vain tulentelekoilla.
- Retkeile rokotusmatto- ja puustossa eikä jäteasteissa.
- Voit poimia marjoja ja sienii, mutta ei kiviä tai kasveja.
- Pidä lemmikkieläimet kyseksytynä.
- Varauduhan siihen, ettei käynnilläsi ole paperia.
- Häätämyksiä 112 – tiedä mistä soittaa – käynnillä ei kuulu kaikkialla puustossa!
- www.luontoon.fi/reponvesi > Oikeat ja säämot

112 SUOMI
Mobiililsovellus apuuttaa avunsaantia hätätilanteissa/ A mobile application speeds up aid in emergency situations in Finland
www.digia.com/112suomi

METSÄHALLITUS DIGIA
ENVIRONMENTAL SALES LARI

METSÄHALLITUS *luontoon.fi retkikartta.fi*

Maailmanperintökohde Verlan puuhomion ja pahlavien alue
World Heritage Site Verlan Sprucewood and Board Mill Area
Ohranen kansallispuisto KIELOKANGAS-ALUE
National Park Ohranen KIELOKANGAS-AREA



Kansallispuisto - National Park Reponvesi

Lapsua silmällä kymmenien järven ja lampien rikastuttamassa metsämaaisemassa. Ketunossilla, näkötorista ja muista maista kohteista voit löytää oman Reponvesiseikkailun!

Reponvesi kansallispuisto ja metsäyhtiö UPM:n omistama yksityinen Aamunkierros metsän suojelualue muudostavat yhdessä lähes 30 km²:n laajuisen uuden luonnonsuojelualuekokonaisuuden, josta löytyy eritasoisia merkityksiä reitistöjä. Pienjärven reitti, kauniit maaiset ja hyvät palvelut houkuttelevat myös vesiretkien.

Reponvesi kansallispuisto sijaitsee Kouvolan pohjoisosassa. Helisignali on noin 180 km, Kouvolaan kulkemista noin 45 km ja Mikkelistä Mäntymarjuun kautta noin 80 km. Puiston sisäntien yhteydessä on pysäköintialueet, jolta ohjataan retkeitä. Bussiyhteydet Kouvolaan ja Mäntymarjulle kulkevat tien 368 kautta.

Alueelle voi saapua myös vesitse, yrityksillä vuokratavet kanojen ja jätinjätin kaljuuksia. Paikalliset markkinyhteydet tarjoavat myös majutusta, ohjelmapalveluita sekä välinekorrausta.

Retkit
Reponvesi vaihtelevat maastot tarjoavat erityisesti reittäjä-pääväestölle tai pidemmille vaelluksille. Maaston suuret korkeudet

haastavat retkeilyä testaamaan kurtuaan. Kaakunkierros (pengeritzi) 24 km, 1-4 viikkoa kestävien puuston tulospörröiden ja nähtävyyksien kautta. Korpi kierros (pengeritzi) 4,5 km, 3-5 h kiertää Ohranenlammen Hoimoli Lapinlammen silta on parempi, jellen Lapinlammen pysäköintialueesta puuston pääsee aivan veden alle. Puiston reitit yhdistyvät muihin seudun reitistöihin. Reponveelle voi saapua vaikkapa Mäntymarju-Reponvesi-reitillä pikin (www.mantymarju-reponvesi.com). Reitit sopii myös maastopyöräilyyn.

Reponvesi luonto
Reponvesi maaisemaa muodostavat laajoista aumattomista metsistä, jyhkistä kallioyhteyksistä ja kymmenistä kirkkaista järvistä ja lampista. Alueen pohjoisosan granitiilla tyypillinen suorakulmainen loikelu on saanut aikaan jyhkkeitä pinnoitumia jyrkenteen ja loikkimökin. Eteläosassa taas esiintyy rapakiviä, joka hajottaa helposti pieniksi palasiksi. Kaikkien on yksi alueen tunnetuimmista asukkaista. Reponvesi karta on yksi Etelä-Suomen themiä. Kaikkien ainekkaita soidimien ja kiviä on valkea oia huomattava.

Reponvesi's rugged forests are dotted with blue lakes and ponds. The National Park offers accessible adventures for everyone. Its hills and cliffs challenge even hikers and climbers.

Reponvesi National Park together with adjoining Aamunkierros Nature Reserve form a magnificent protected area of almost 30 km². Reponvesi is located just a couple of hours from Helsinki and it provides fine settings for short forest rambles and tougher treks. The routes along narrow lakes past the main attractions of the area offer excellent possibilities for canoeing. You can visit Reponvesi also with the help of the services offered by local nature tourism enterprises.

Trails
Kaakunkierros Trail (circle trail, 26 km, a hiking trip for 1-4 days goes through all the park entrances and main attractions). Korpi kierros (circle trail 4.5 km, a 3-5-hour-hike) goes around Ohranenlammen Pond. Attention! The hanging bridge of Lapinlammi has been removed. It is possible to cross the water only by manually operated Fox Ferry boat in use in winter.

Trails of the park also connect to Mäntymarju-Reponvesi trail (www.mantymarju-reponvesi.com)

Seuraavat yritykset noudattavat kestävä luontomatkailun periaatteita toimissaan kansallispuistossa:
(Lisätietoja: www.luontoon.fi/reponvesi/palvelut/yhteistyötahot) Following enterprises follow the principles of sustainable nature tourism when operating in the national park (More information: www.nationalparks.fi/en/reponvesi/services/partners)

Aholan Vierastalo www.aholanvierastalo.com	Kukkulinnantupa puh/vei +358 (0)40 579 5311 www.kukkulinnantupa.fi	Oravasalmen huvilat www.oravasalmen.com	Tyhyhyvinoivopalvelut Eira Turkki www.eiraturkki.fi
Aurantola www.aurantola.fi	Kuutin kolo www.kuutinkolo.fi	Orilammen maja ja lomakeskus www.orilammen.com	WHO Gärd www.who.gard.fi
Bikehike maastopyöräily www.bikehike.fi	Kymisen www.kymisen.fi	Raataamo www.raataamo.fi	Vuohijärven luonto- ja kulttuuritalo www.kulttuuritalo.vuohijarvi.fi
Elämyksen taika www.elamyksen.taika.fi	Lammenvilla www.lammenvilla.fi	Reponvesisekus/Repojos www.reponvesisekus.fi	Majutus Accommodation Kokkila/ryntinpalvelut Restaurant/catering services Sauna Retket ja ohjelmapalvelut Excursions & program services Välinevuokraus Equipment rental Vesiliikenne Water bus/boat taxi Nähtävyydet Sights Lentäminen Camping/travel Maailmanperintökohde World Heritage Site
Eri-Atas www.eri-atas.fi	Linkkumylly www.linkkumylly.fi	RepoTasus repositasus@gmail.com	SeikkailuKari www.seikkailukari.fi
Eänen info.enen@gmail.com puh/vei +358 (0)40 521 3821	Finlandia Natur www.finlandia.natur.fi	SeikkailuKari www.seikkailukari.fi	Skafu-Tour skafu-tour.fi
Four Seasons Outdoors www.fourseasonsoutdoors.fi	Verlan maailmanperintökohde www.verlan.com	Teemu ihan pihalla teemuhanpihalla.blogspot.fi	Tervamperu/Reponveke www.tervamperu.fi
Kikan patjat kikanpatjat@gmail.com puh/vei +358 (0)50 303 3168	Markkula Simbell www.simbell.com	Moini www.moini.fi	
Kirjokiven Kartano www.kirjokivenkartano.fi			

Lähilueen nähtävyyksiä
Reponvesi-Verlan alue Kouvolaan ja Mäntymarjuun välillä tarjoaa paljon kiinnostavaa nähtävää myös kansallispuiston ulkopuolella. UNESCO:n maailmanperintökohde Verlan puuhomion ja pahlavien alueen muistomerkkiä UNESCO World Heritage Site Verlan Sprucewood and Board Mill you'll step into the end of the 19th century. Along the way to Reponvesi National Park, Vuohijärven luonto- ja kulttuuritalo etelässä ja Salmelan talokeskus pohjoisessa ovat erinomaisia pysähtymäpaikkoja kulttuurin ystäville. Myös vanhoja kannattavaa tutustua myös WHO automaateen sekä ihastella Reponvesi kansallispuiston maisemia Evingsin tornin näköalapaikalta.

Sights near the park
Located between Kouvola and Mäntymarju, Reponvesi-Verla area offers several interesting sights also outside the Reponvesi National Park. In the UNESCO World Heritage Site Verlan Sprucewood and Board Mill you'll step into the end of the 19th century. Along the way to Reponvesi National Park, Vuohijärven Nature and Culture House in south and Salmela Art Centre in north provide perfect spots for all culture lovers. You might also want to visit the WHO Car Museum or admire the view over the Reponvesi National Park from the Evings Tower lookout spot.



EUROOPAN MAASOUDURKEHÄMÄISEN MAAILMANPERINTÖKOHDE: EUROOPPA INVESTITI MAAILMANPERINTÖKOHDE



PHOTOS: SAARA LAVI

26 km circle trail

Kaakkurinkierros



Kaakkurinkierros Trail takes hikers through the park's most popular areas as well along its less-travelled paths.

The crags of Kirnuhuoko and peace and solitude of the wilderness can be experienced in the northeast section of the park along the quieter trails. Making a small campfire at the Kirnukangas lean-to shelter, which is situated on the banks of a marsh pond, is the perfect way for even the most experienced hiker to feel the peacefulness of nature.

The trail passes by all the park trailheads. There are several campfire sites along the trail. You can also stay overnight without a tent at one of the reservable wilderness huts. Along the way, you should absolutely make a detour to the Mustalammenvuori HILL scenic outlook tower, which provides a nice overview of the landscape you have been passing through.

The Kaakkurinkierros Trail is an excellent trail for hikers making their first extended hike. Hikers can test their hiking skills at



their own pace and enjoy the varied terrain. With a full-sized backpack on, the hike will go more slowly than when doing a hike with a smaller pack, so be sure to make some time for the occasional rest stop. When it comes to hiking, there is no reason to rush. It's an ideal way to leave the hustle and bustle of the workaday world behind and enjoy being in nature.

Hike with all of your senses and let nature soothe and invigorate you!

Tips for visitors

- When hiking in Repovesi, visitors are expected to follow the principle of Leave No Trace - whatever you pack in, you pack out.
- In addition to other bird species, the Red-throated Diver nests at Oihavanlampi Pond and Oihavanvuori Rock. Take birds into consideration when hiking on the trail and leave them alone during nesting season.
- Dogs are allowed in the park, but they must be kept on a leash at all times.

Basic trail information

Start point:
Any of the park trailheads: Tervajärvi, Saarijärvi or Lapinsalmi.
Length: 26 km
Duration: 2-4 days
Open: During the thaw. The trail is not maintained during the winter.

Difficulty: If you are setting out on a longer hike, you should ideally possess some hiking experience and set aside enough time to make the hike. Even though there are many rises and descents along the way, the park also has easy, flat terrain.

Route signs/markings: All of Repovesi's trails are marked by orange paint markers on trees. Signs with the Kaakkurinkierros Trail symbol help hikers stay on the right trail.

Things to see and experience: Varied terrain, with forests and small bodies of water. Overnight stays out in nature and the peace and quiet it offers. Morning coffee by a lake. Scenic vistas from atop rocky promontories. Suspension bridges and the manually-operated Ketunlossi "Fox ferry". Kirnuhuoko Cavern and its rocky crags.

Recommended gear: Hiking gear appropriate for the season. Tent for camping or a reservable hut (advance reservation required). Map. Items for making a campfire. An adequate amount of provisions. **There are three wells along the trail. Check the potability of the well water on the Repovesi site at nationalparks.fi (Under "Services")**

- You may pick berries and mushrooms. Do not remove any stones or plants from the park.

Repovesi National Park
Additional information and ideas for hike planning and up-to-date information:
www.nationalparks.fi/repovesinp
repovesikansallispuisto

Repovesi Virtual Guide:
www.visitrepovesi.fi/en





Thank you!

metsa.fi/web/en/nature-tourism
metsa.fi/web/en/sustainablenaturetourism

teppo.loikkanen@metsa.fi



METSÄHALLITUS